

SF30SET



°SF30SET

SF30 was designed for use either on sloped surfaces, or (with the accompanying "L" bracket) on the sides of suspended panels. The Gripper swivels on the base a full 180 degrees, allowing for angled or even mobile designs.

° Product Information

cable size

1/16" 1.5 mm
3/32" 2.5 mm

2-3

maximum weight

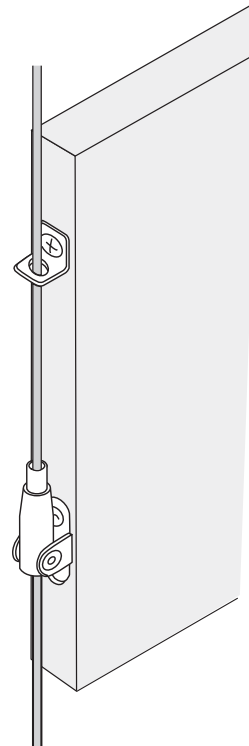
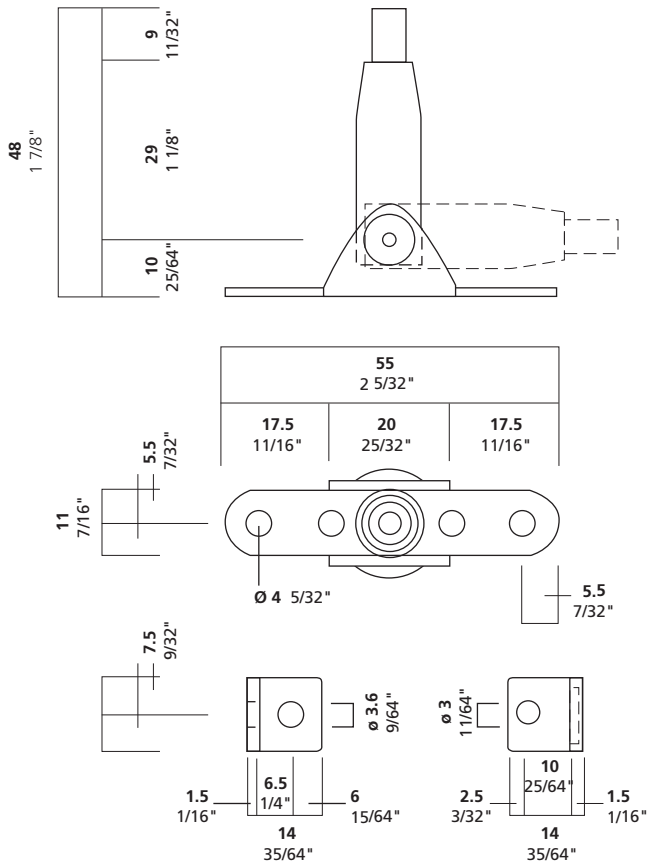
1/16": 65 lbs. 30 kg
3/32": 155 lbs. 70 kg

function

ceiling: where movement is required or sloped ceilings
midway: (w/ L guide) plexiglass, wood, metal

installation instructions

Screw to panel or wood. L-bracket installs on top of panel to guide cable, SF30 installs to bottom. Use #8 screws.



Arakawa Hanging Systems

2505 SE 11th Avenue, Suite 122
Portland, Oregon 97202
phone: 503.236.0440
fax: 503.236.0427
toll free: 888.272.5292

www.arakawagrip.com



Copyright © 2007 Arakawa & Co., Ltd. All rights reserved. Arakawa products are covered by U.S. and foreign patents, issued and pending. Specification and price change privileges reserved.