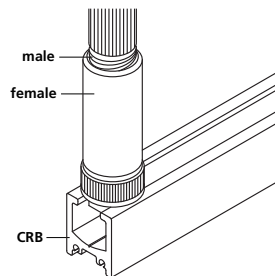
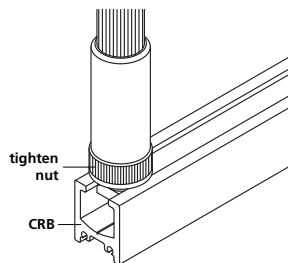
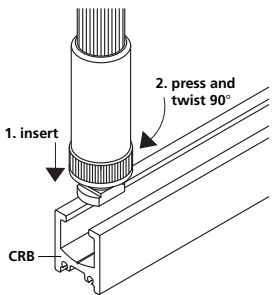
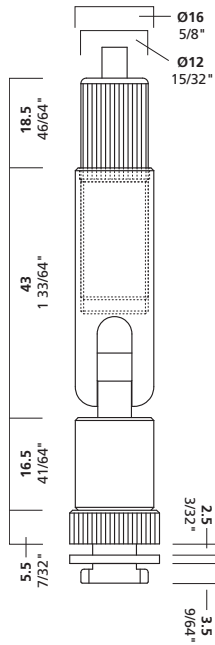


BS23DRSET



°BS23DRSET

BS23DRSET is a bottom tensioning rail clip for the CRB/CRC Rail system. BS23DRSET provides the option of an angled installation from the CRB/CRC Rail system.



Product Information

cable size

3/64" 1.2 mm

1/16" 1.5 mm

1-2

maximum weight

3/64": 40 lbs. 18 kg

1/16": 65 lbs. 30 kg

function

rail fitting: CRB/CRC rail tensioner for floor installation

installation instructions

To install the BS23DRSET rail clips align properly, insert into the rail, twist 90°, then tighten the locking nut. Before cable can be inserted, unscrew the male threaded portion of the tensioner from the female portion. Tighten only by hand, use no tools to tension. Cable must be inserted 1 1/2", and must be soldered.

Arakawa Hanging Systems

2505 SE 11th Avenue, Suite 122

Portland, Oregon 97202

phone: 503.236.0440

fax: 503.236.0427

toll free: 888.272.5292

www.arakawagrip.com



Copyright © 2007 Arakawa & Co., Ltd. All rights reserved. Arakawa products are covered by U.S. and foreign patents, issued and pending. Specification and price change privileges reserved.